

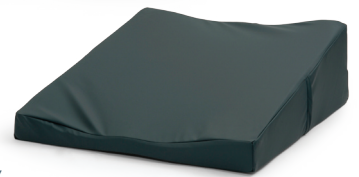
BedWedge™

Cares for your body whether relaxing or sleeping.

Specially contoured and adjustable for your comfort. Also features 'built-in' support column to gently cushion the spinal arch.



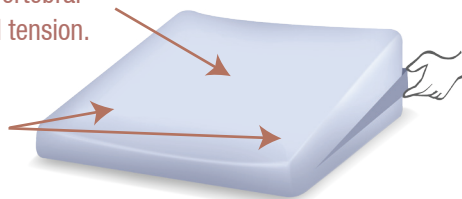
- Mildly angled to minimise pressure to the weight bearing lower vertebrae.
- Encourages correct spinal alignment, spreads the load, provides body-hugging support.
- Ideal for persons suffering medical conditions requiring an angled sleeping position.
- Beneficial for bronchial or respiratory problems, hiatus hernia, heart conditions, gastric reflux.
- Developed by health professionals seeking the most appropriate slope and contours



Zip-off quilted cover, or moisture resistant, bacteria inhibiting (hospital grade) Steri-Plus™ cover options

Gentle support column absorbs vertebral pressure and helps relieve spinal tension.

Scalloped area moulds to the body's contours. Gives the user a 'secure' feeling for sleeping.



Removable foam insert allows you to change the angle to suit your optimum comfort needs. Note: Angle is 15 degrees, and 10 degrees with insert out.

